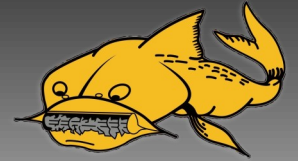


# SLURRY PUMP & CONTROLLER



**EXCELLENT PUMP PERFORMANCE MATCHED  
WITH STATE OF THE ART CONTROL PANEL  
FOR ALL YOUR DEWATERING AND  
WATER TRANSFER REQUIREMENTS.**

**SAND MINES**

**QUARRIES**

**MINE SITE**

**GOLF COURSE POND**

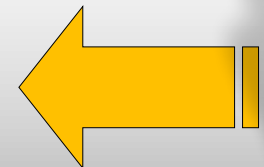
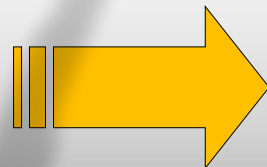
**PRIVATE LAGOON**

**FARM IRRIGATION**

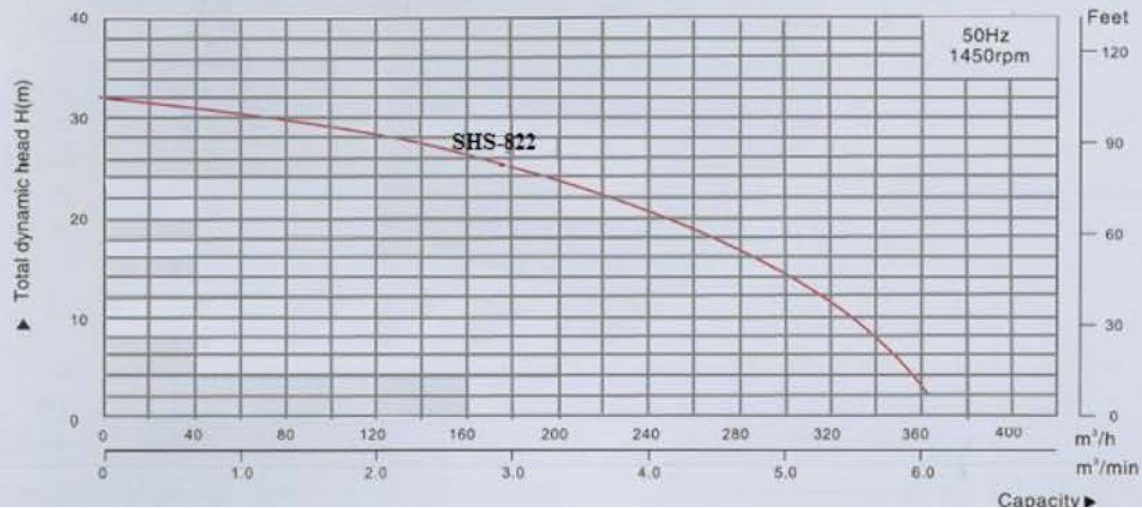
**SLURRY EXTRACTION**

**SAND EXTRACTION**

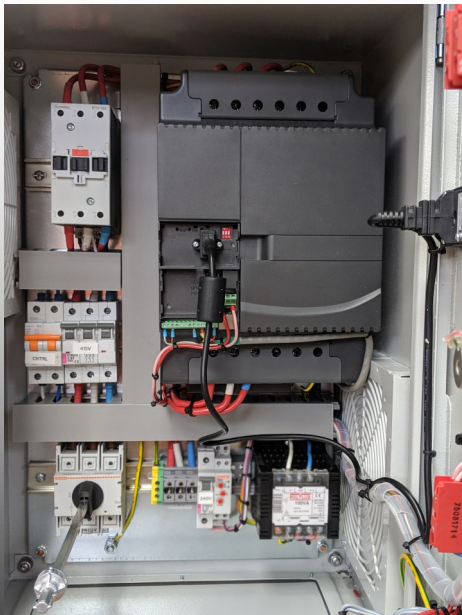
**WASTE WATER PONDS**



## Performance curves



## PUMP VSD CONTROLLER



## MULTIPLE LIFT POINTS AND FORKLIFT POINTS



## PUMP SPECIFICATIONS

MOTOR POWER	:	22 Kw
MAX HEAD	:	32 METER
MAX. CAPACITY	:	6 M3/MIN
IMPELLER PASSAGE	:	30 mm
WEIGHT	:	400 kg
No. OF POLES	:	4-POLE
DISCHARGE:	:	DN200 (8-inch)
INSULATION CLASS	:	F
WATER TEMPERATURE	:	UP TO 40° C
IMPELLER	:	CHROMIUM STEEL
SUCTION PLATE	:	CHROMIUM STEEL
AGITATOR	:	CHROMIUM STEEL
MECHANICAL SEAL	:	SiC/SiC + SiC/SiC

For Rental or Purchase plans...Contact Us...

## PUMP PONTOONS

(a Division of Roll-a-Pipe Pty Ltd)

473 Warrigal Road Moorabbin VIC 3189

P: +61 3 9532 2263

W: [www.minidredgers.com.au](http://www.minidredgers.com.au)

E: [info@minidredgers.com.au](mailto:info@minidredgers.com.au)